



mounting instruction
XR I200 "Cafè racer" Triple Clamps (202402)



Installation time : 240 minute

Tools requirement : 1) Scissor Bike lifter (JACK)

2) Lithium Grease

3) M5 - M6 Allen wrench

4) 1/4 Inch Allen wrench

5) 22 - 28 mm. Socket wrench

6) 7/8 - 11/16 Inch Socket wrench

7) T50 Torx wrench

8) Torque wrenches

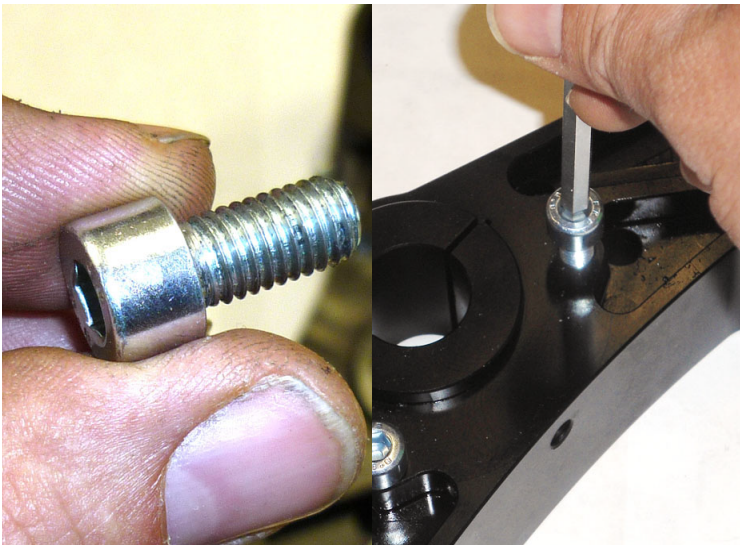
9) Seeger ring Clamp



1

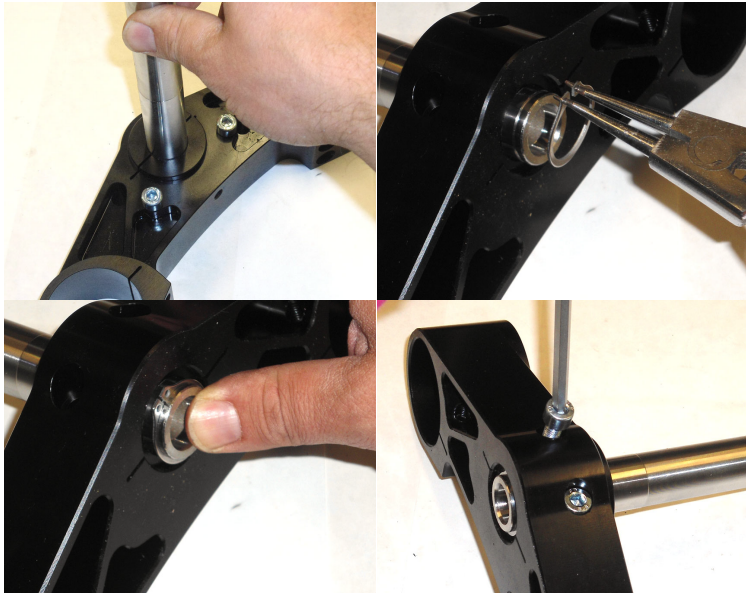
Check the technical design and make sure you have all the pieces

The technical design will be useful for the following steps.



2

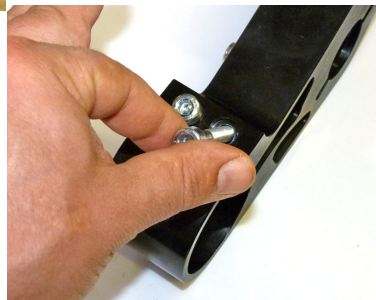
Fasten bolt m8x16 to the bottom plate.



3

Insert axle and seeger ring, fasten two bolt m8x35 to the bottom plate.

Then tighten bolts to 22-27 Nm.



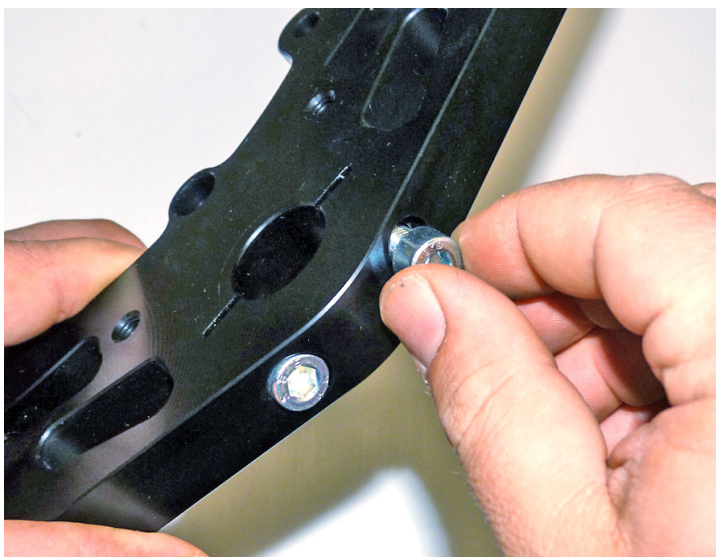
4

Insert four bolt m8x45 to the bottom plate same as pictures.



5

Insert 2 bolt m8x40 same as pictures.



6

Insert 2 bolt m8x35 same as pictures.



7

Insert the red socket and secure it with M8x50 .
Place the top plate and thickness, same as pictures.



8

Fasten bolt m8x45.
Insert two bolt m8x60.

9



To support the bike, lift it under the frame.

10



Unfasten OEM top trees.

11



- A) dismount headlamp.
- B) Unfasten top nut.

12



Unfasten and remove instruments.

13



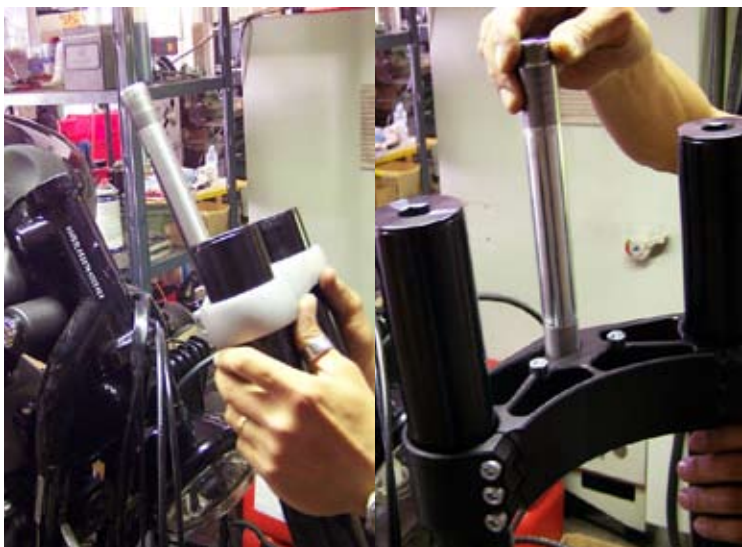
- A) Dismount handcontrol .
- B) Remove handlebar.

14



- Remove OEM top trees.
- Before unfasten the OEM under trees measure distance between trees and top fork (Look fig. 18).

15



Slip off OEM bottom trees.
Insert new trees.

16



Insert bearing on new bottom trees.
(Use waterproof grease on bearing)

17



Install new bottom trees on bike.
Insert bearing and spacers.
(Use waterproof grease on bearing)

18



Measure and fasten fork stem (10 Nm) on new bottom trees.
Mount handlebar and control now, if you wish to mount it under top trees.

19



Mount new top triple trees and new nut.

20



Fasten nut to 42 Nm.



21

Fasten top trees bolts to 14.7 Nm.



22

Slide instruments cable on headlamp bracket.

23



Mount headlamp (used new bolt and spacers).



24

Fasten clip on bars with 22Nm.
Fasten instruments.

XR 1200 Café Racer Triple Clamps 202402

