

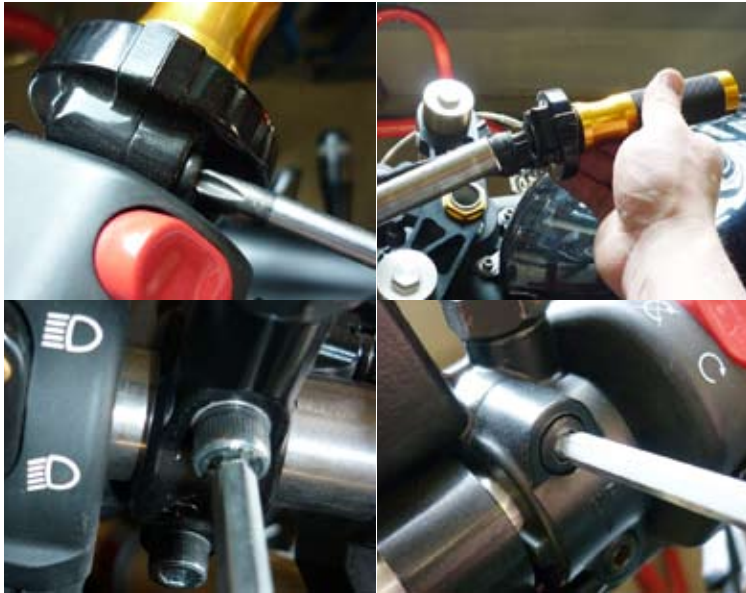


mounting instruction  
Clip on bar Diam. 50mm.  
(Cod. 302203)



Tempo di installazione : 60 minuti

- Lista attrezzatura : 1) Cacciavite a croce  
2) Chiavi a brugola 5 mm.  
3) Trapano  
4) Punta da 6 mm.



1

Remove the controls from the handlebar.



2

Remove Switch.

3



Install clip on bar sx.



4

Drill clip on bar to install headlight switch.  
Reinstall controls.



5

Install clip on bar dx.  
Drill clip on bar to install switch.  
Reinstall controls.